

### Topics in Rank Order

Topic	14	3	10	7	8	11	4	5	9	1	12	6	13
Rank ALL Papers	2	4	5	3	1	6	9	8	11	7	12	10	13
Rank P3: A* Focus	1	2	3	4	5	6	7	8	9	10	10	12	13
All Syllabus Word Count RANK	1	2	5	3	6	4	9	7	10	8	12	11	13
Words per % ALL Papers	44.4	49	51.2	56.6	29.9	37.2	19.79	59	38.9	49	39	51	49.8

Greener = Better; "Words per %..." refers to the words in the syllabus versus weighted marks awarded since w2001

### Key Points

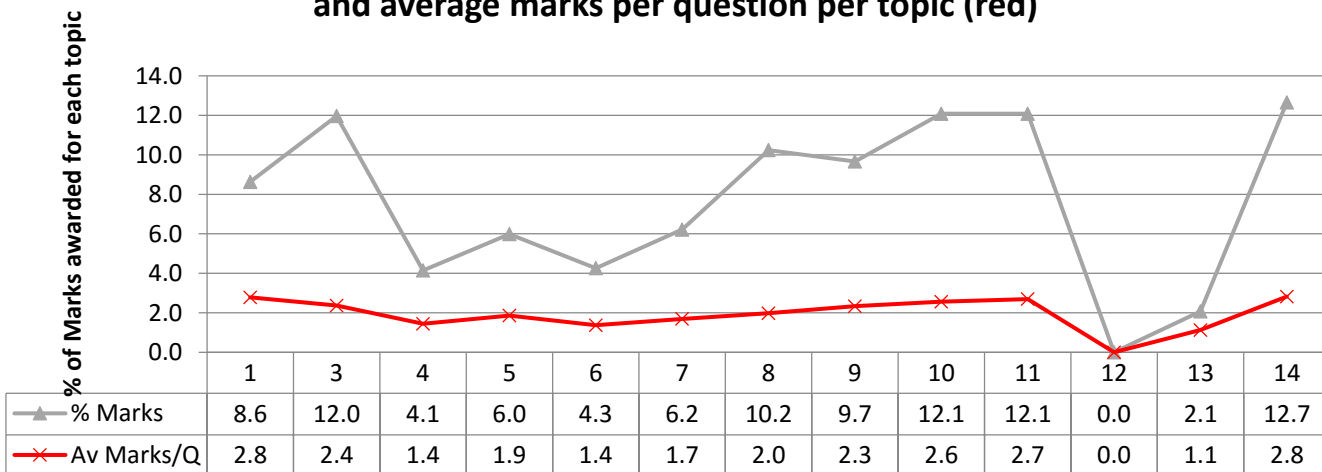
- To do well, you must learn T8 (40 and 10.5% of P6 & P3) but to get an A\* T14 is essential (20.2% of P3).
- Papers 1 and 6 are changing this year to include the supplement (harder) material, so whilst the questions will be harder a reasonable prediction would be the relative marks awarded per topic will be the same.
- Paper 3 historically is the most important paper, with the new changes, the higher level questions (dealing with the Supplement section) might be more spread out across the 3 papers, meaning that more core material will be examined in paper 3. However, a student determined to get an A\* should be most concerned about topics ranked highest in P3, which is why the table above is ordered according to P3, for "A\* Focus".
- These are just averages, so for instance T13 is not often examined, so appears less relevant, but when it is in a paper (P3) it will be on average 5 marks, and because it is all supplement material, these will be a lot of the higher marks. This data should hopefully allow you to prioritise topics in your revision.



- T4 is the most efficient topic to learn (least to learn per mark awarded), provided you are good at maths (predicted to get at least a B grade), otherwise it is by far the least worthwhile topic (which these numbers don't show but has been my experience in teaching).
- If there was a fire and you had to leave one topic behind, T5 would be the one taking a hit for the team.
- Most important topics to your grades are 14, 8, 3, 10, 7 and 11, in that order.

### PAPER 1

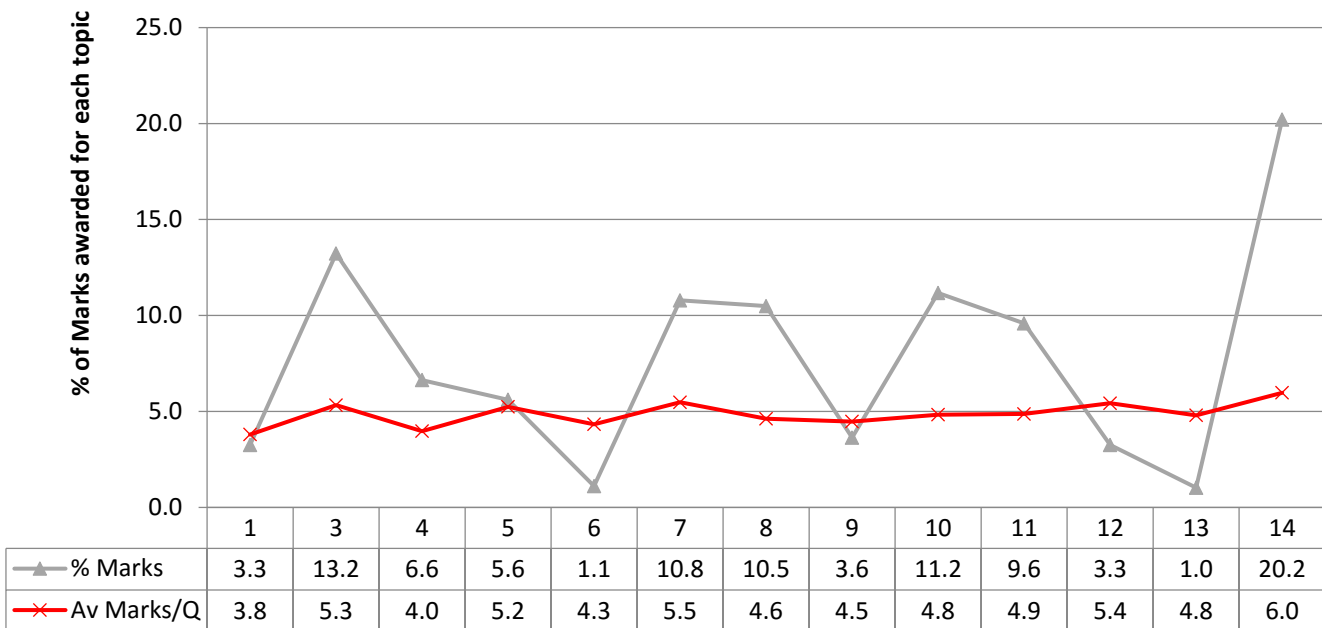
Percentage of all marks awarded for each topic from s2002 to w2012 and average marks per question per topic (red)



Paper 1 Topic Number

### PAPER 3

Percentage of all marks awarded for each topic from w2001 to w2015 and average marks per question per topic (red)

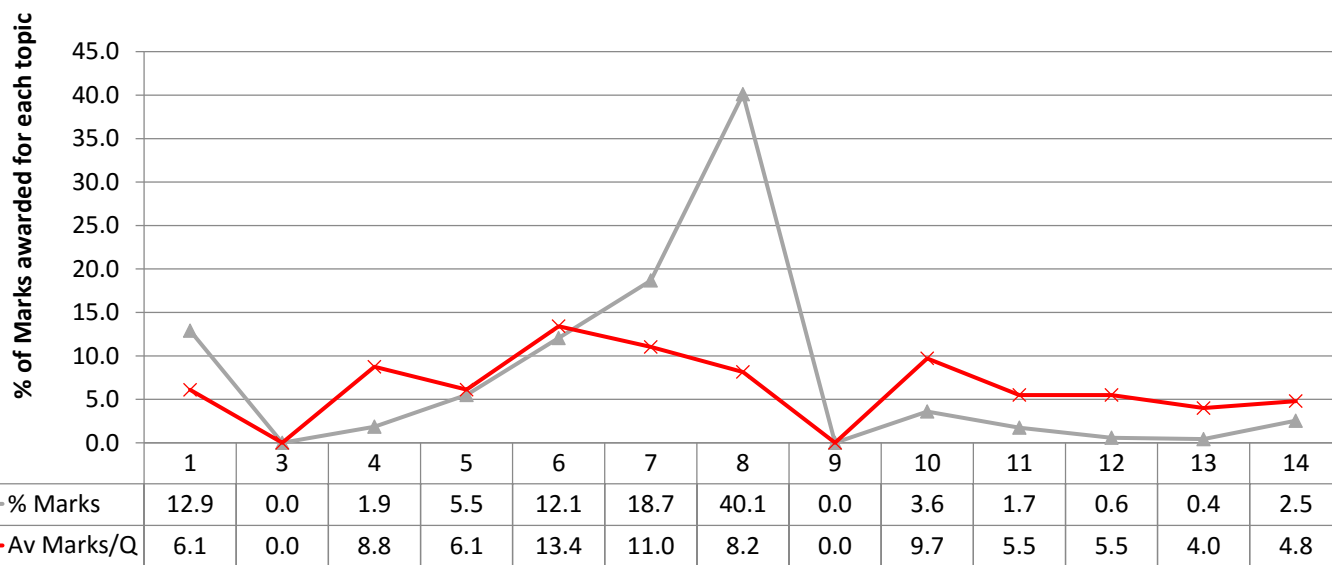


Paper 3 Topic Number



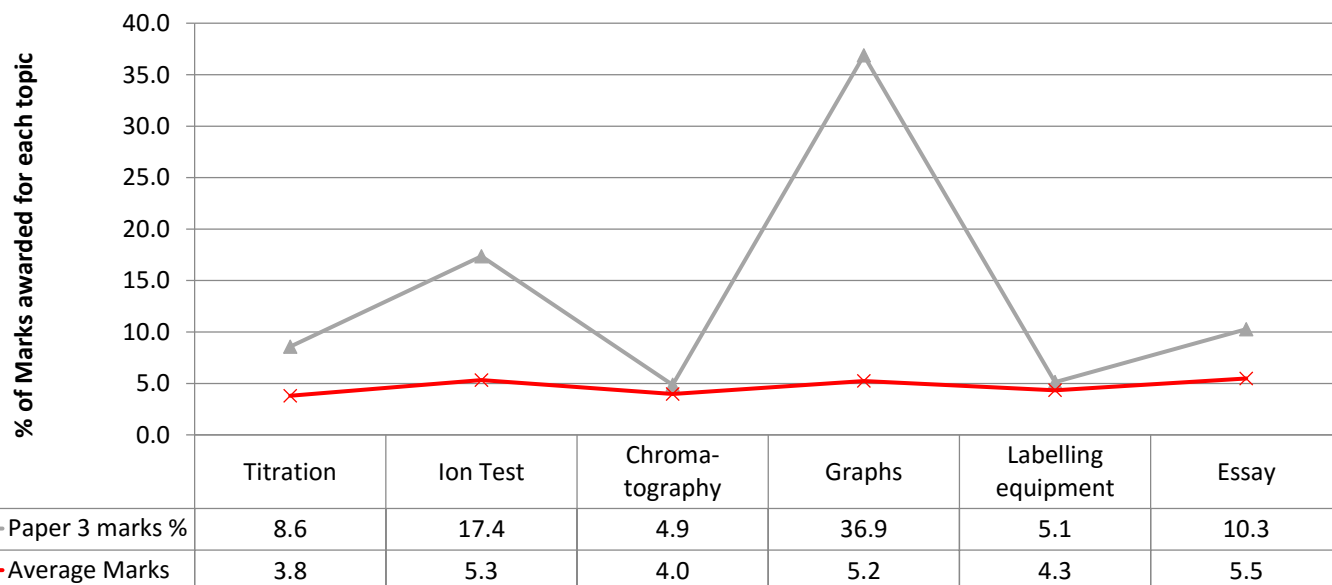
## PAPER 6

Percentage of all marks awarded for each topic from w2001 to w2015 and average marks per question per topic (red)



Paper 6 Topic Number

Mean number of marks per question type (red) and % of all marks awarded for each topic from w2001 to w2015



Paper 6 Topic Number

Above are the main experiments and the main question types in Paper 6. Word files broken down by these categories are available on my website (e.g.

s



Raw Data Info

		Topic													Averages
		1	3	4	5	6	7	8	9	10	11	12	13	14	
P1	% of Marks	8.6	12.0	4.1	6.0	4.3	6.2	10.2	9.7	12.1	12.1	0.0	2.1	12.7	7.7
P1	# of Questions	27.0	44.0	25.0	28.0	27.0	32.0	45.0	36.0	41.0	39.0	0.0	16.0	39.0	30.7
P1	Average marks per Q	2.8	2.4	1.4	1.9	1.4	1.7	2.0	2.3	2.6	2.7	0.0	1.1	2.8	1.9
P3	% of Marks	3.3	13.2	6.6	5.6	1.1	10.8	10.5	3.6	11.2	9.6	3.3	1.0	20.2	7.7
P3	# of Questions	20.0	58.0	39.0	25.0	6.0	46.0	53.0	19.0	54.0	46.0	14.0	5.0	79.0	35.7
P3	Average marks per Q	3.8	5.3	4.0	5.2	4.3	5.5	4.6	4.5	4.8	4.9	5.4	4.8	6.0	4.9
P6	% of Marks	12.9	0.0	1.9	5.5	12.1	18.7	40.1	0.0	3.6	1.7	0.6	0.4	2.5	7.7
P6	# of Questions	40.0	0.0	4.0	17.0	17.0	32.0	93.0	0.0	7.0	6.0	2.0	2.0	10.0	17.7
P6	Average marks per Q	6.1	0.0	8.8	6.1	13.4	11.0	8.2	0.0	9.7	5.5	5.5	4.0	4.8	6.4
ALL	% of Marks (Weighted)	6.8	9.9	4.9	5.7	4.4	11.5	17.2	4.2	9.6	8.4	1.9	1.1	14.4	7.7
ALL	# of Questions	87.0	102.0	68.0	70.0	50.0	110.0	191.0	55.0	102.0	91.0	16.0	23.0	128.0	84.1
ALL	Average marks per Q	2.1	2.7	2.0	2.2	2.4	2.9	2.5	2.1	2.6	2.5	3.2	1.4	3.1	2.4
<b>Rank Order</b>		<b>7</b>	<b>4</b>	<b>9</b>	<b>8</b>	<b>10</b>	<b>3</b>	<b>1</b>	<b>11</b>	<b>5</b>	<b>6</b>	<b>12</b>	<b>13</b>	<b>2</b>	



Papers Used and Statistics needed to produce merge the 3 papers into the ALL Paper 1, 3 and 6 graph

	1st Paper	Last Paper	Total Papers	Paper Total Mark	Total Marks All Papers	Actual All Marks	Difference	Weight per paper	Weight per mark
<b>Paper 1</b>	s02	w12	22	40	880	869	-11	30	0.75
<b>Paper 3</b>	w01	w15	29	80	2320	2336	16	50	0.63
<b>Paper 6</b>	w01	w15	29	60	1740	1890	150	20	0.33

Comments

Yellow indicates the paper range for P1 is not the same as for the other papers, this is because P1 is changing, and taking apart that paper is particularly soul destroying, I can't justify the hours of mind-numbing tedium if the information is going to be increasingly irrelevant.

Blue indicates the substantial difference in the total number of marks I should be able to account for (Total Marks All Papers) and the ones that have gone into the topic calculations. This is hopefully the result of a RANDOM error where some questions have had parts duplicated and I have not filtered these duplications out.



## Words per topic

Topic	1	3	4	5	6	7	8	9	10	11	12	13	14	Averages	Totals
Core Syllabus Word Count	218	344	131	130	58	183	273	209	241	287	44	56	363	195.2	2537
Supplement Syllabus Word Count	82	141	122	191	73	245	68	41	134	124	29	2	352	123.4	1604
All Syllabus Word Count	300	485	253	321	131	428	341	250	375	411	73	58	715	318.5	4141
Core Syllabus Word Count %	5.3	8.3	3.2	3.1	1.4	4.4	6.6	5.0	5.8	6.9	1.1	1.4	8.8	4.7	
Supplement Syllabus Word Count %	2.0	3.4	2.9	4.6	1.8	5.9	1.6	1.0	3.2	3.0	0.7	0.0	8.5	3.0	
All Syllabus Word Count %	7.2	11.7	6.1	7.8	3.2	10.3	8.2	6.0	9.1	9.9	1.8	1.4	17.3	7.7	
All Syllabus Word Count RANK	8	2	9	7	11	3	6	10	5	4	12	13	1	7.0	
<b>% Total ALL Papers</b>	6.8	9.9	4.9	5.7	4.4	11.5	17.2	4.2	9.6	8.4	1.9	1.1	14.4	7.7	
<b>% Total P3: A* Focus</b>	3.3	13.2	6.6	5.6	1.1	10.8	10.5	3.6	11.2	9.6	3.3	1.0	20.2	7.7	
Words per % ALL Papers	44	49	51	57	30	37	20	59	39	49	39	51	49.8	44.2	
Words per % P3	25	11	18	34	66	23	6.5	11	12	13	9	2	17.4	19.0	

Although this is only one course so there is very little data at present to go on, a possible generalisation which might be of value when studying for other CIE subjects is that the more words there are in the syllabus, the more important that topic is to the exam. So to get an idea, count the words (can be done electronically: 1. Mark for redaction all of the section of the syllabus for supplement 2. Redact 3. Copy and past all of it to word 4. Do the same for supplement 5. Highlight the topic and word will give you the number of words). The actual results of this will not probably be too surprising, but outcome of this exercise and why it will help is it will force you to think objectively about the syllabus. Instead of thinking about the things that you didn't like or you didn't think you were good at, you will have the opportunity to get a different perspective on the subject. And hopefully, instead of thinking of the subject as a whole, you will start to break it down into more manageable chunks and begin the process of prioritisation, which when done well, is perhaps the most important principle in thought.

